

AMF-BRUNS PROTEKTOR® SYSTEMS

PRO 2 system:

- 2 retractors
- 2 static belts
- 1 pelvis belt
- 1 shoulder belt
(available separately)

PRO 4 system:

- 4 retractors
- 1 pelvis belt
- 1 shoulder belt
(available separately)

AMF-BRUNS WARRANTIES

- 12 months warranty from day of purchase.
- Please follow the general instructions as well as the care instructions.
- If the product is not used properly any warranty will expire.
- If the wheelchair restraint system is changed unauthorised any warranty will expire.
- The AMF-Bruns Protektor restraint system is only suitable for wheelchairs which are fixed in travelling direction.
- Any warranty will expire, if non-original parts are used.
- Any warranty claim needs to be directly addressed to the AMF-Bruns customer service department.
- AMF-Bruns reserves the right to inspect broken parts.

AMF-BRUNS CUSTOMER SERVICE DEPARTMENT

Mr Droste Phone +49 (0) 44 89 / 72 72 50

In addition, we refer to our "General Terms and Conditions" which can be sent to you upon request. The manual represents the state of knowledge when it went to print, and is subject to modifications.

EMERGENCIES

To be able to cut the belts quickly in case of an accident, please use an emergency belt cutter, e.g. the AMF-Bruns one! We recommend to always carry an emergency belt cutter along in your vehicle.



Item no. 150108

GENERAL INSTRUCTIONS

- The AMF-Bruns Protektor wheelchair restraint systems shall be only used to restrain wheelchairs. Any other use is neither intended nor appropriate.
- Damaged belts or broken parts must not be used, and have to be replaced by original parts.
- In case of an accident, all system parts have to be replaced.
- The wheelchair is never to be positioned in front of an activated air bag! Airbag needs to be deactivated.

CARE INSTRUCTIONS

- All belts and parts have to be checked for any damages on a regular basis.
- The belt system has to be cleaned on a regular basis
- Only use gentle cleaning products.
- Please make sure that the belt system does not come into contact with oil, grease or any caustic liquid at any time.
- Do not use any sharp objects for cleaning, e.g. knives, to avoid product damage.

DECLARATION OF CONFORMITY

The AMF-Bruns Protektor system fulfils the following national and international specifications: DIN 75078-2, EU Directive 2001/85, ISO 10542, Arrêté Ministériel du 02 Juillet 1982 (F), VVR (NL), PSV Accessibility regulations 2000 (GB), AS 2942 - 1994 (AU), ÖNORM V 5603 (A).

The AMF-Bruns Protektor system has been tested in dynamic crash tests using a surrogate wheelchair (85 kg) and a dummy (76 kg) with a speed of 50 km/h, and a braking ratio of 20 G; in addition, there have been numerous static tests as well as road trials. All results were well above the required standards.

Please note: The short operation manual does not replace the regular operation manual! Please read the regular operation manual carefully before using the product.



AMF-Bruns GmbH & Co. KG

Hauptstraße 101 | 26689 Apen | Germany

Phone (sales) +49 (0) 44 89 / 72 72 -50

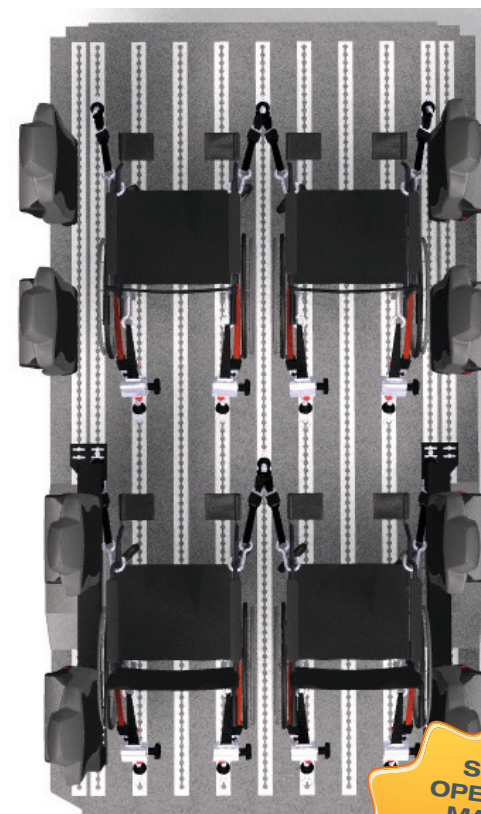
Fax +49 (0) 44 89 / 62 45

hubmatik@amf-bruns.de | www.amf-bruns.de

AMF-Bruns PROTEKTOR®

SHORT OPERATION MANUAL

For safe transport of wheelchair and occupant



**SHORT
OPERATION
MANUAL**

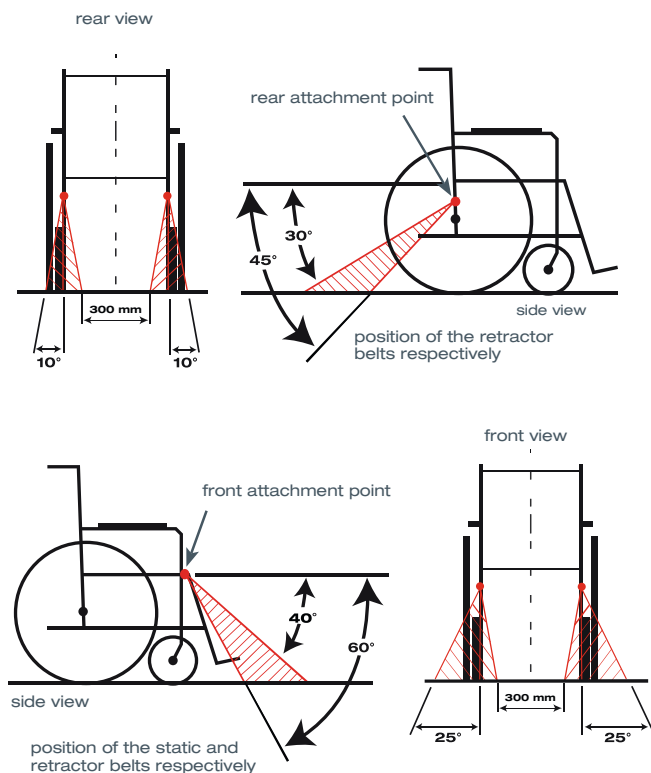
Please read carefully
before using and
keep at hand
inside your vehicle.



www.amf-bruns.de

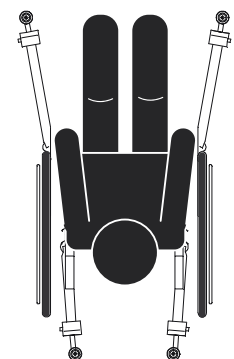
Art.-Nr. 10019406 | 06/2020

OPTIMAL ATTACHMENT ANGLES AND ATTACHMENT POINTS FOR THE AMF-BRUNS PROTEKTOR® SYSTEM



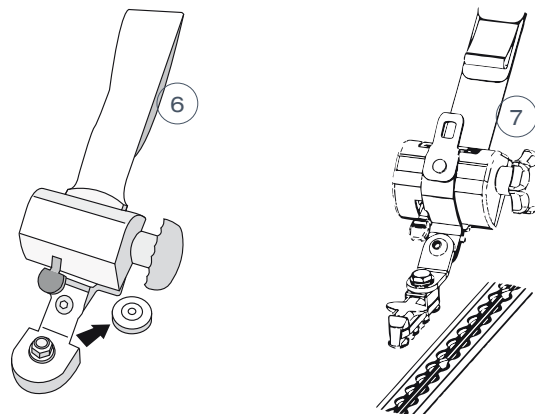
Required angles and positions of the belts from wheelchair to vehicle floor. Front belts should be configured in an angle that ensures optimal side stability. The hatched area shows where the belts have to be fixed to the vehicle floor.

CAUTION! Static and retractor belts shall be only attached to the wheelchair's robust tube frame! Use static belts for front attachment ONLY.



RESTRAINING THE WHEELCHAIR

- Drive the wheelchair into the car in travelling direction.
- The wheelchair is never to be positioned in front of an activated air bag! Airbag needs to be deactivated.
- Check if angles and belt positions are conform with the figure shown above.



HOW TO FIT THE BELTS TO THE FLOOR

Floor fitting options:

Mono system (figure 6)

Place Mono fitting flat on the floor and pull it over the Monodisc. Release Mono fitting by pulling it back.

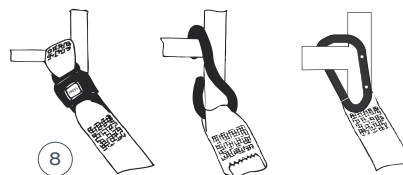
Rail system (figure 7)

Insert 4 stud fitting angular into the rail and pull in on the side. Release fitting by pulling the plunger.

HOW TO ATTACHE THE BELTS TO THE WHEELCHAIR

Connection to wheelchair (figure 8).

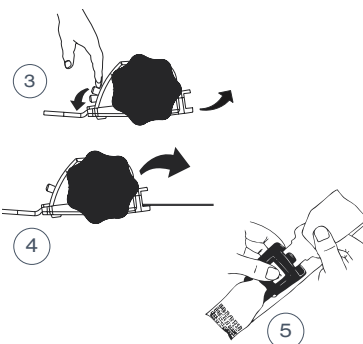
CAUTION! Static and retractor belts shall only be attached to the wheelchair's robust tube frame, never to foot rests or wheels!



HOW TO TIGHTEN AND RELEASE THE BELTS

Release belts (figures 3 and 5)

Tighten belts (figure 4)



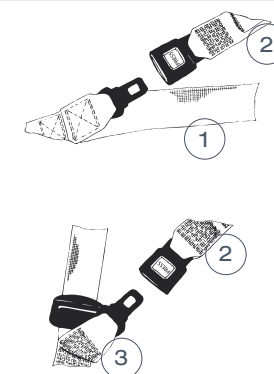
PELVIS AND SHOULDER BELT

Attach pelvis belt by pulling it gently backwards along the body to the retractor belts (both sides) and click it into the latches located on top of the retractor (not applicable for „Kraftknoten“ adapter fitting).

Fasten pelvis belt as shown in figure 1.

Then attach shoulder belt or automatic shoulder belt to the latches located at the pelvis belt as shown in figure 2.

Restraints MUST NOT be guided via wheelchair components such as armrests or wheels!



BELT SPECIFICATIONS

Figure 1
pelvis belt (red)

Figure 2
shoulder belt

Figure 3
retractor belt